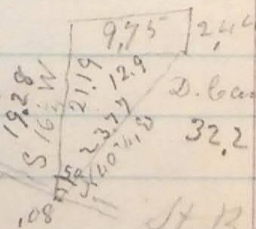


March 22 1876

Survey for Daniel Campbell on
 Amos Maycock commencing at
 the N.W. C. of Maycocks, then N 40 3/4
 E 23.77 ch. & connect with E line of
 1/4 Sec, then N 2.41 ch to N.E. C. of
 1/4 Sec. (of Maycock Entry) then W
 9.75 ch. to Charles Rees's N.E. C.
 then S 16 1/2 W 21.19 Ch. to Maycocks
 N.W. C. and place of beginning &
 Survey for Charles Rees, on Daniel
 Campbells Land, provided that there
 is S 56⁵⁶ E. 0.8 ch. to the place
 of beginning this

& to measure in md

of S E. 50 ch. to Rees
 instead of S E. 0.8 ch.



D. Campbell
 32.2 acres

St Road Side

975
 244
 3900
 3900
 1950
 237900

19.28 = Rees W line
 1.684
 975
 8420
 11788
 5156

1241700
 820950
 237900
 1058750